



Floor Plans

We have a range of flexible facilities to cater for every occasion ranging from a conference for 400 to an dinner for 10.

Room	Area m ²	Theatre	U Shape	Classroom	Cabaret	Banquet	Cocktail	Boardroom
Terror To Love	306	300	80	160	160	180	350	100
Blossom Lady	240	160	60	100	120	140	250	80
Chairman's Suite	30	-	12	-	-	-	35	15
Silks	613	400	-	300	300	380	400	-
Silks Suite	36	-	18	-	-	-	40	18
Christian Cullen	748	600	-	360	350	420	600	-
Breckon's Winners Bar	36	-	6	-	-	-	30	16
IRT Stables	1875	-	-	-	1000	1000	3000	-
The Clubhouse	445.5	-	-	-	200	250	300	-

The above capacities are dependent on AV requirements and room set-ups.

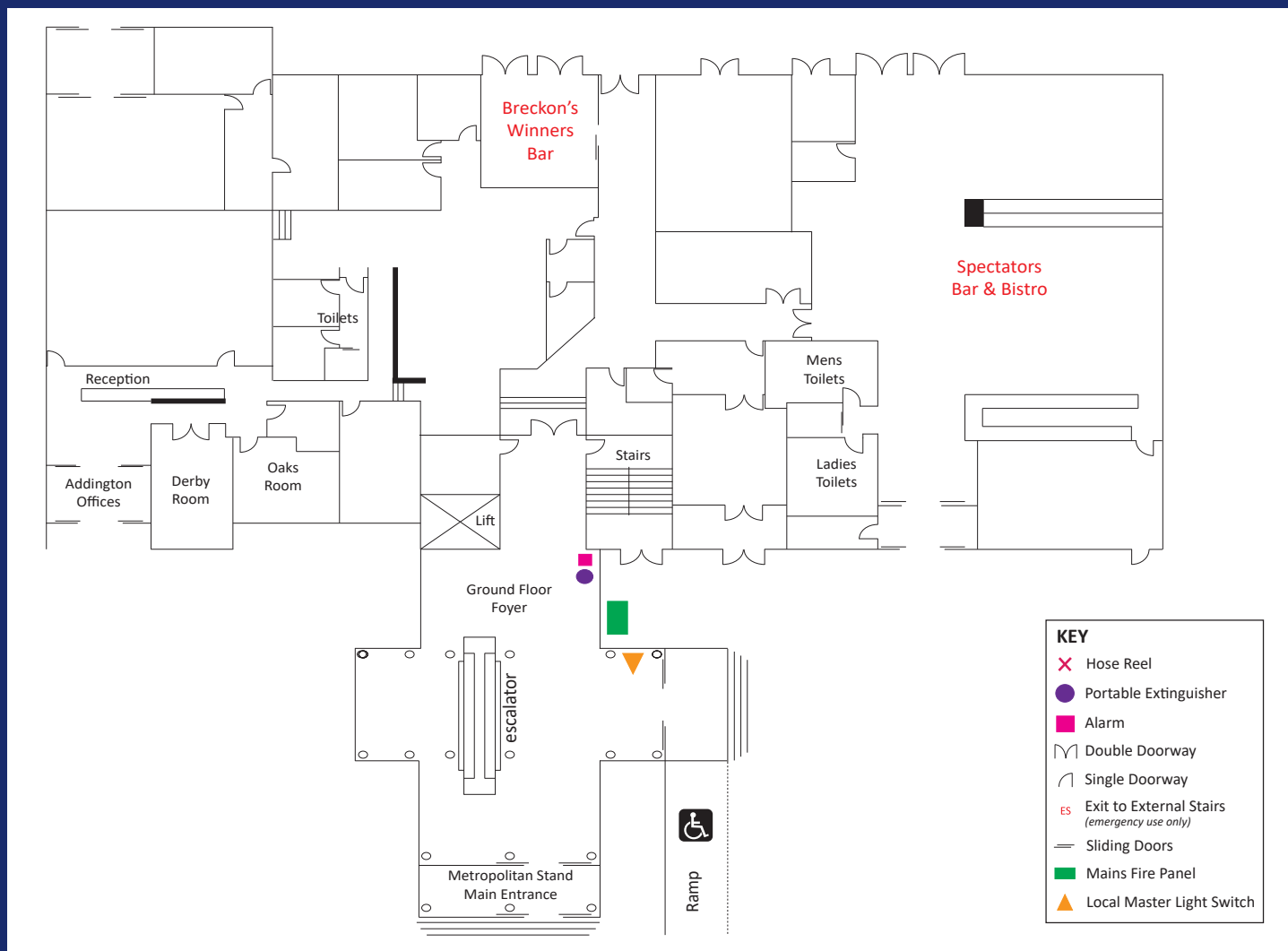
Metropolitan Stand - Ground Floor

The revamped Breckon's Winners Bar, located on the ground floor of the Metropolitan Stand, is an ideal venue for smaller meetings of up to 16 guests. The indoor / outdoor flow from this room onto the Lanson lawn makes it a fabulous location for a small cocktail gathering.

Specifications

Dimensions	Area	Room	Ceiling	Door	Natural Light			
	Sq M	(L x W)	(H)	(H x W)				
Breckon's Winners Bar	36m ²	6.3m x 5.5m	2.6m	2.18 x 1.13m	Y			
Set Up	Theatre	U-Shape	Classroom	Cabaret	Banquet	Cocktail	Boardroom	
Breckon's Winners Bar	-	6	-	-	-	30	6	

The above capacities are dependent on AV requirements and room set-ups.



Metropolitan Stand - First Floor

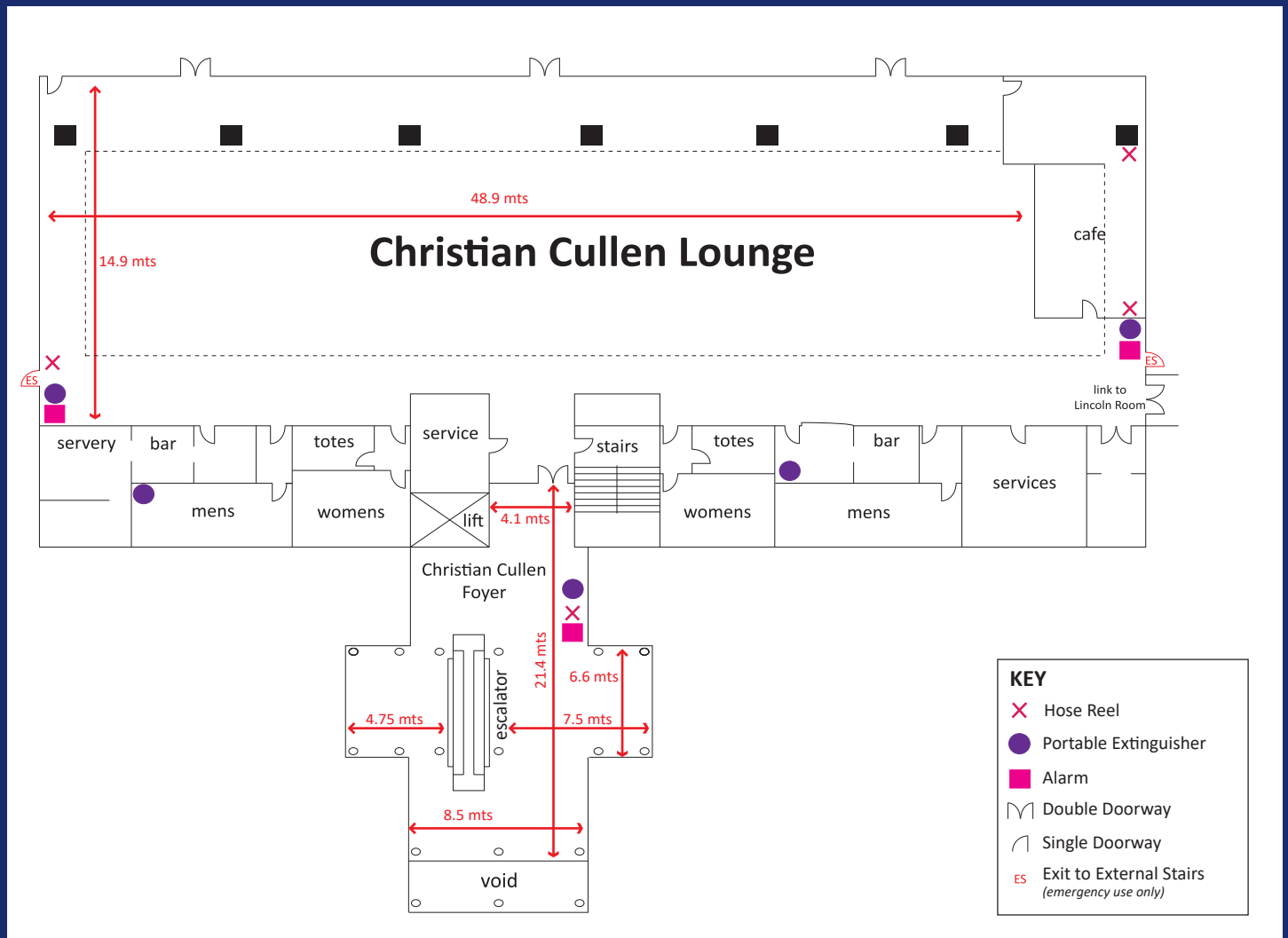
Located on the first level of the Metropolitan Stand, Christian Cullen Lounge is our largest single venue. It's generous size makes it ideal for trade shows, conferences and large banquets. It is fully air conditioned and accessible via escalator, stairs and a commercial sized lift.

Specifications

Dimensions	Area	Room	Ceiling	Door	Natural Light	Lift Door	Lift Interior
	Sq M	(L x W)	(H)	(H x W)		(H x W)	(L x W)
Christian Cullen	748m ²	48.9m x 14.9m	2.79m	2.07 x 1.55m	N	2.09m x 1.3m	2.1 x 1.57m

Set Up	Theatre	U-Shape	Classroom	Cabaret	Banquet	Cocktail	Boardroom
Christian Cullen	600	-	360	350	420	600	-

The above capacities are dependent on AV requirements and room set-ups.



Metropolitan Stand - Second Floor

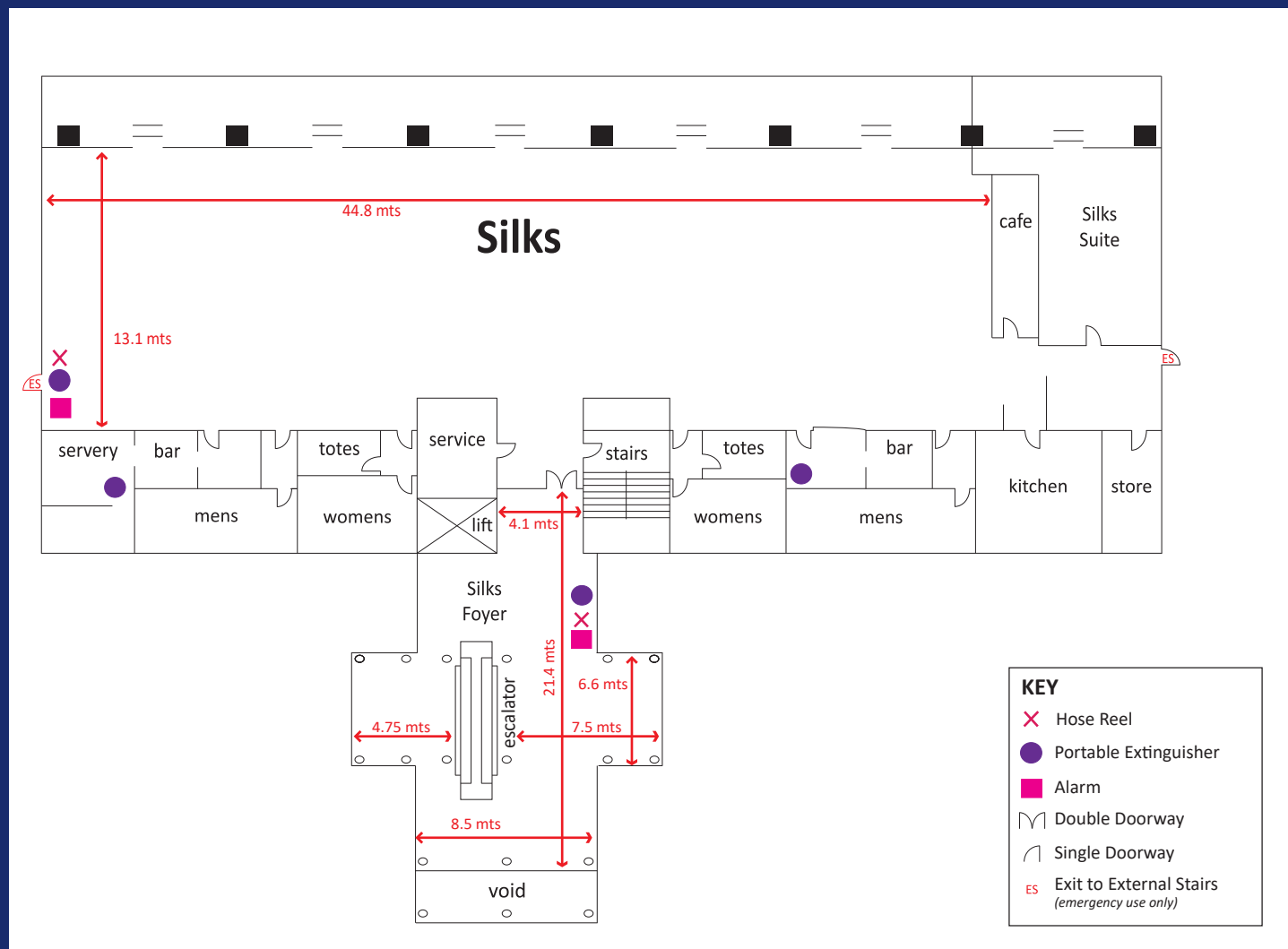
Silks retains the same sense of elegance found in the Blossom Lady and Terror To Love venues but is nearly twice their size. With beautiful vistas of the Southern Alps, Silks is an ideal choice for large dinner functions and meetings, trade shows and conferences. Silks can be accessed via escalator, stairs and a commercial sized lift.

Specifications

Dimensions	Area Sq M	Room (L x W)	Ceiling (H)	Door (H x W)	Natural Light	Lift Door (H x W)	Lift Interior (L x W)
Silks	613m ²	44.8m x 13.1m	2.79m	2.07 x 155m	Y	2.09m x 1.3m	2.1 x 1.57m
Silks Suite	36m ²	6.8m x 5.29m	2.79m	2.07 x 155m	Y	2.09m x 1.3m	2.1 x 1.57m

Set Up	Theatre	U-Shape	Classroom	Cabaret	Banquet	Cocktail	Boardroom
Silks	400	-	300	300	380	400	-
Silks Suite	-	18	-	-	-	40	18

The above capacities are dependent on AV requirements and room set-ups.



Metropolitan Stand - Third Floor

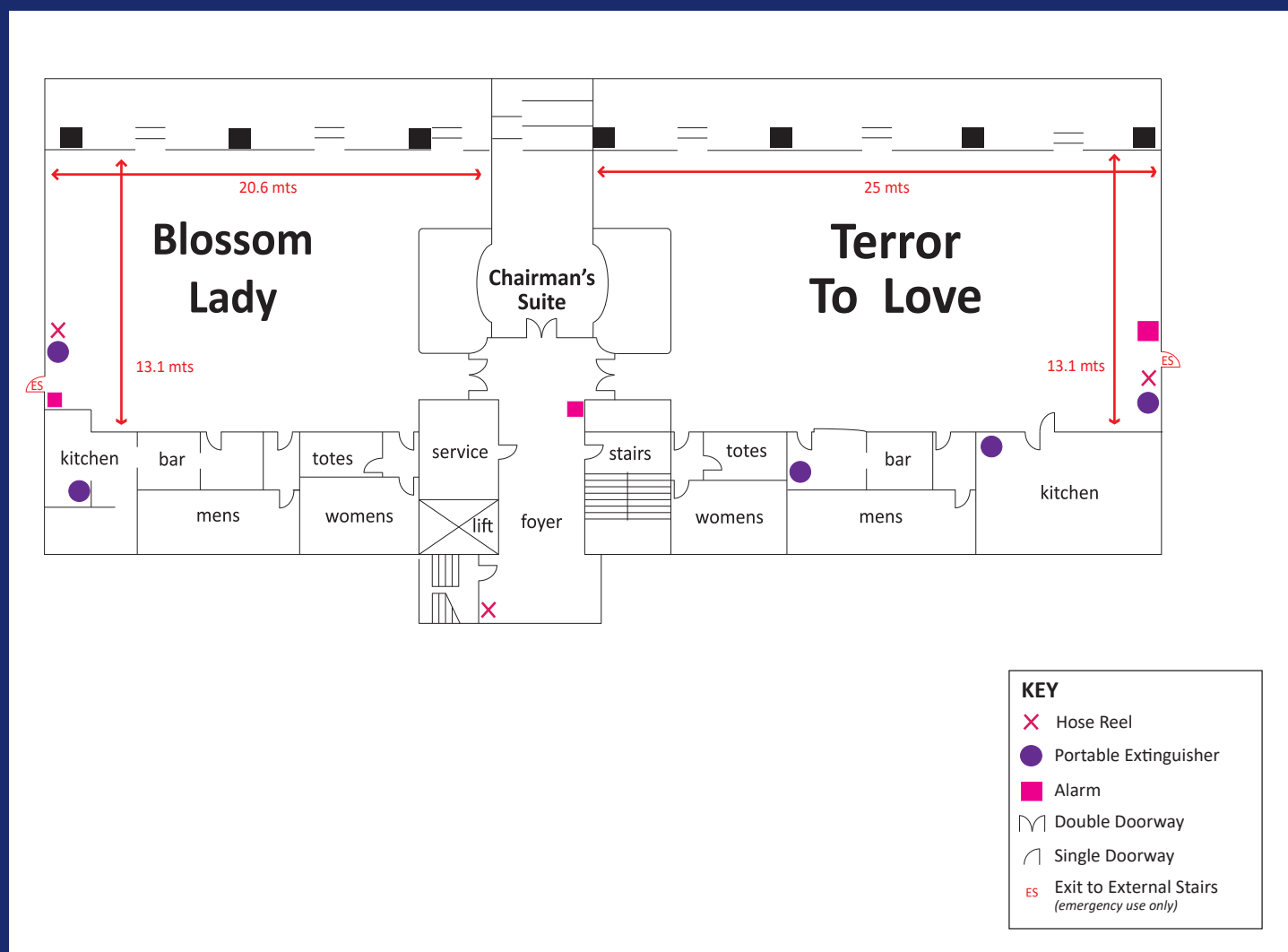
With their stylish interiors and stunning, panoramic views of the Southern Alps, the Blossom Lady and Terror To Love Lounges are sought after venues. Situated on the third floor of the Metropolitan Stand these rooms are frequently used for seminars, business gatherings and mid-sized, seated banquets. They are fully air conditioned and accessible via stairs and a commercial sized lift.

Specifications

Dimensions	Area Sq M	Room (L x W)	Ceiling (H)	Door (H x W)	Natural Light	Lift Door (H x W)	Lift Interior (L x W)
Terror To Love	306m ²	25m x 13.1m	3m	2.07 x 155m	Y	2.09m x 1.3m	2.1 x 1.57m
Blossom Lady	240m ²	20.6 x 13.1m	3m	2.07 x 155m	Y	2.09m x 1.3m	2.1 x 1.57m
Chairmans Suite	30m ²	11.2m x 4.5m	3m	2.07 x 155m	Y	2.09m x 1.3m	2.1 x 1.57m

Set Up	Theatre	U-Shape	Classroom	Cabaret	Banquet	Cocktail	Boardroom
Terror To Love	300	80	160	160	180	350	100
Blossom Lady	160	60	100	120	150	250	80
Chairmans Suite	-	12	-	-	-	35	15

The above capacities are dependent on AV requirements and room set-ups.



Twiggers Stand - Ground Floor

Located on the ground floor Twiggers is ideal for groups requiring extra space for breakout and dinners. It is fully air conditioned, has a built in bar, stage and dance floor and large windows along one side allowing plenty of natural light.

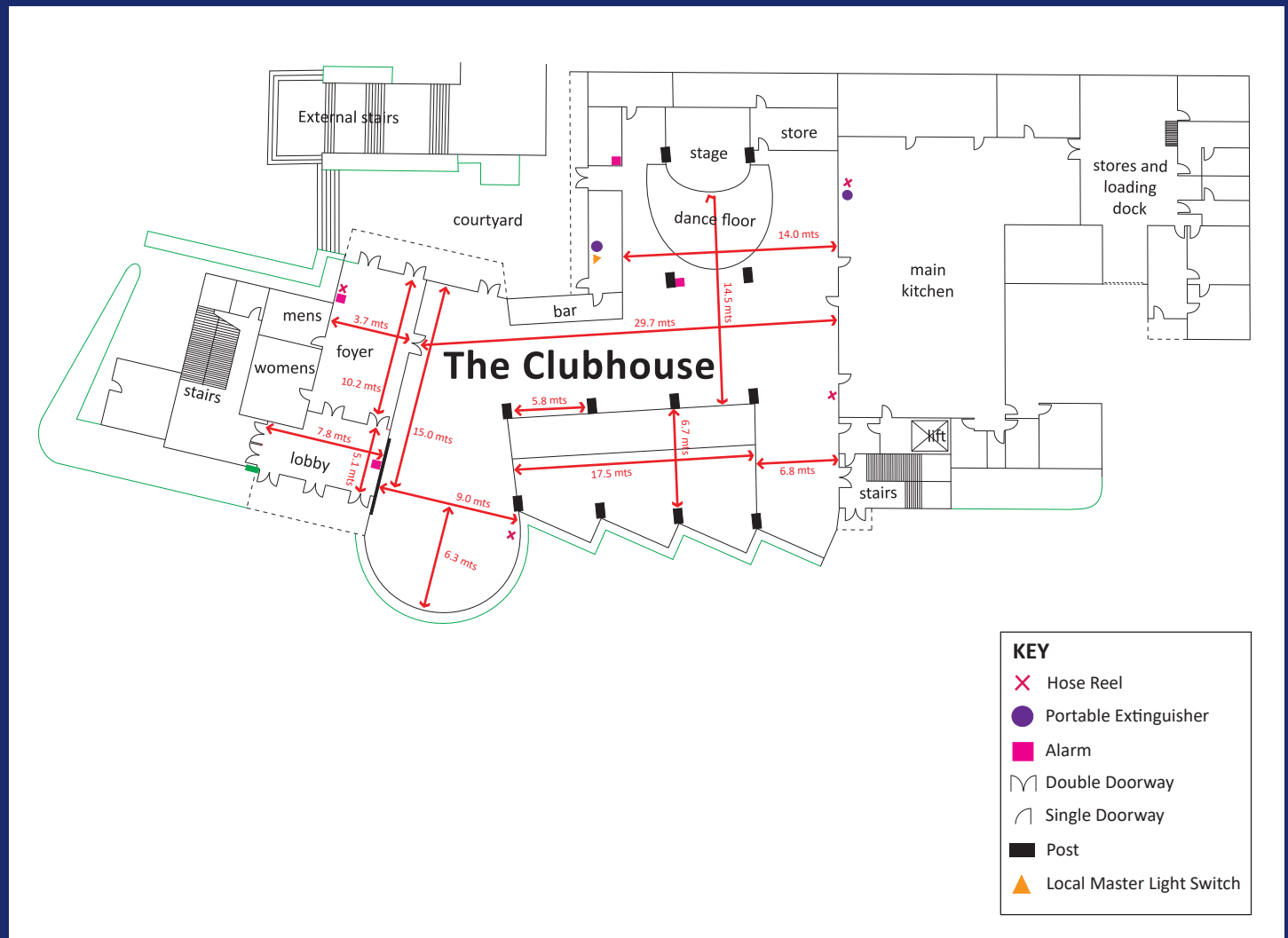
Specifications

Dimensions	Area Sq M	Room (L x W)	Ceiling (H)	Door (H x W)	Natural Light
The Clubhouse	445.5m ²	29.7m x 15m*	3.3m	2.07m x 1.55m	Y

* These measurements are approximate and are for the main floor area and exclude the stage, dance floor and foyer area.

Set Up	Theatre	U-Shape	Classroom	Cabaret	Banquet	Cocktail	Boardroom
The Clubhouse	-	-	-	200	250	300	-

The above capacities are dependent on AV requirements and room set-ups.



The IRT Stables

Located next to the Twiggers Stand and opening onto the Lindauer Lawn, The IRT Stables are perfect for those special events where you need the 'wow' factor from trade shows to school balls.

Specifications

The IRT Stables

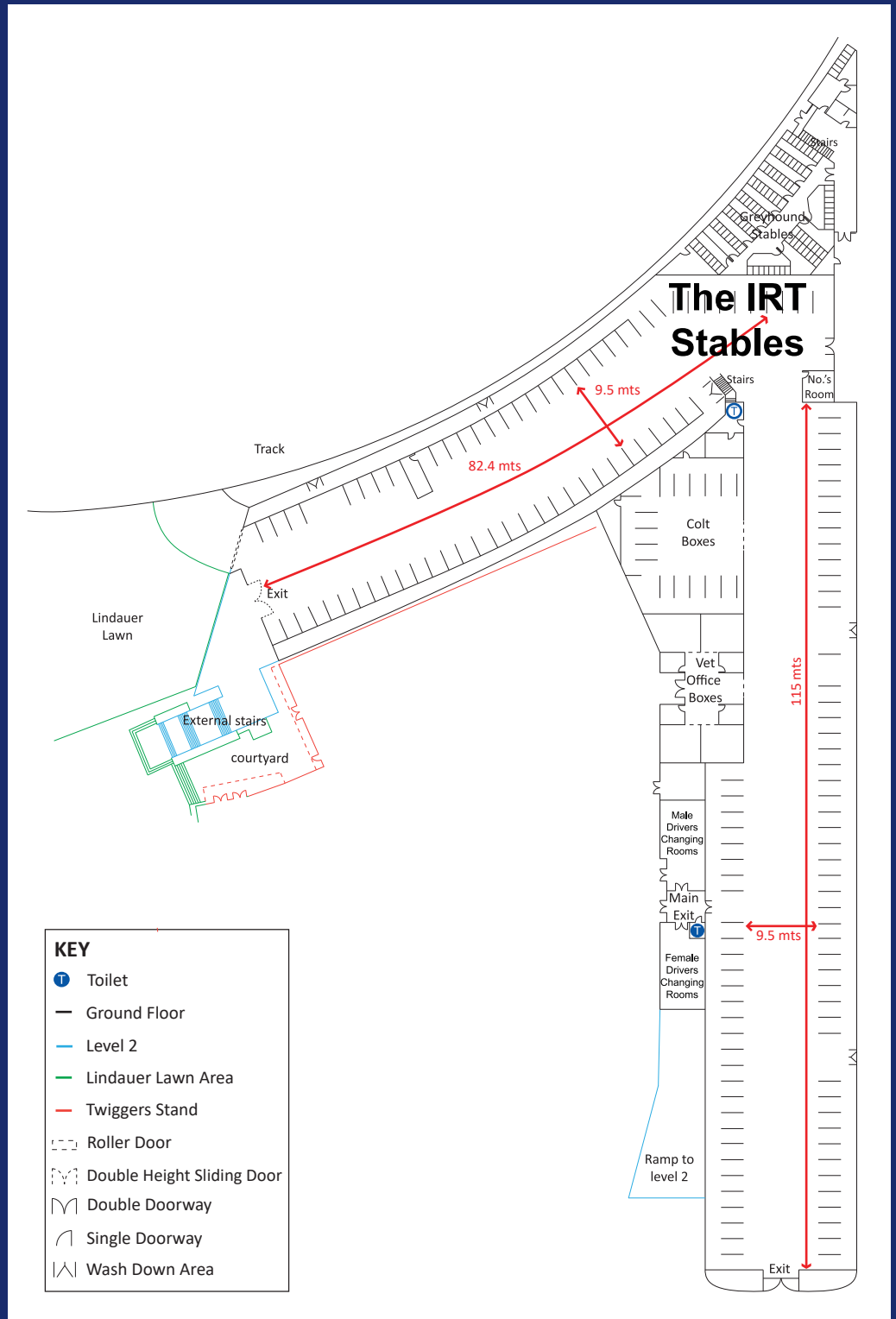
Dimensions

Area Sq M	1875m ²
Room (L x W)	115m x 9.55m
Ceiling (H)	-
Door (H x W)	-
Natural Light	N

Set Up

Theatre	-
U-Shape	-
Classroom	-
Cabaret	-
Banquet	1000
Cocktail	1000
Boardroom	3000

The above capacities are dependent on AV requirements and room set-ups.



Location Map

To access Addington Raceway turn onto Jack Hinton Drive at the round about with Twiggers Street and Boundary Road and make a right hand turn and come past the front of the Arena. Car parking is available in front of both the Metropolitan Stand and Twiggers. Boundary Road is only open to vehicles who require float parking.

1. Metropolitan Stand

Ground Breckon's Winners Bar
Spectators Bar & Bistro
Race Night Reception
Addington Offices

Level 1 Christian Cullen Lounge

Level 2 Silks Lounge
Silks Suite

Level 3 Terror To Love
Chairmans Suite
Blossom Lady

2. Twiggers Stand

The Clubhouse

3. The IRT Stables

4. Christchurch Arena

5. Orangetheory Stadium

